

A

A

B

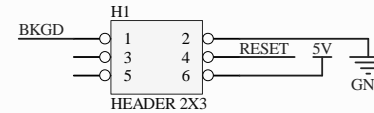
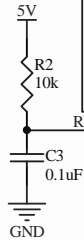
B

C

C

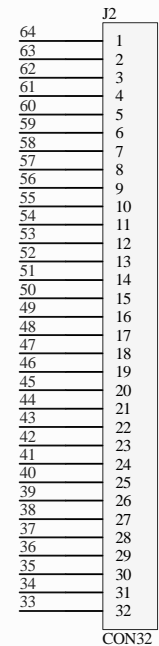
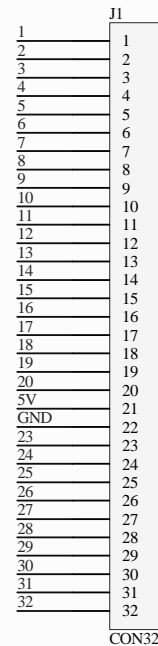
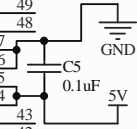
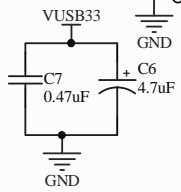
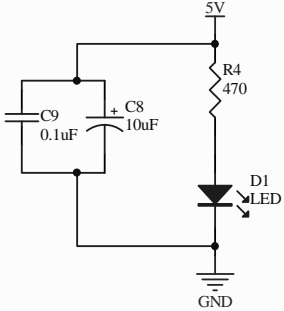
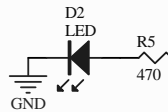
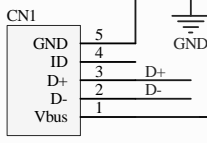
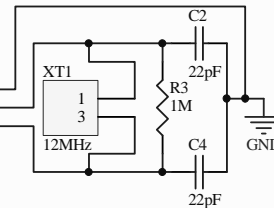
D

D



1	1	PTC4	PTC5/RxD2	64	64
2	2	IRQ/TPMCLK	PTC3/TxD2	63	63
3	3	RESET	RESET	62	62
4	4	PTF0/TPM1CH2	PTC2	61	61
5	5	PTF1/TPM1CH3	PTC1/SDA	60	60
6	6	PTF2/TPM1CH4	PTC0/SCL	59	59
7	7	PTF3/TPM1CH5	Vssosc	58	58
8	8	PTF4/TPM2CH0	PTG4/XTAL	57	57
9	9	PTC6	BKGD/MS	56	56
10	10	PTF7	PTG3/KBIP7	55	55
11	11	PTF5/TPM2CH1	PTG2/KBIP6	54	54
12	12	PTF6	PTD7	53	53
13	13	PTE0/TxD1	PTD6	52	52
14	14	PTE1/RxD1	PTD5	51	51
15	15	PTE2/TPM1CH0	PTD4/ADP11	50	50
16	16	PTE3/TPM1CH1	PTD3/KBIP3/ADP10	49	49
17	17	PTE4/MISO1	PTD2/KBIP2/ACMP0	48	48
18	18	PTE5/MOSI1	Vssad	47	47
19	19	PTE6/SPSCK1	Vrefl	46	46
20	20	PTE7/SSI	Vrefh	45	45
21	21	Vdd	Vddad	44	44
22	22	Vss	PTD1/ADP9/ACMP-	43	43
23	23	USBDN	PTD0/ADP8/ACMP+	42	42
24	24	USBDP	PTB7/ADP7	41	41
25	25	VUSB33	PTB6/ADP6	40	40
26	26	PTG0/KBIP0	PTB5/KBIP5/ADP5	39	39
27	27	PTG1/KBIP1	PTB4/KBIP4/ADP4	38	38
28	28	PTA0	PTB3/SS2/ADP3	37	37
29	29	PTA1	PTB2/SPSCK2/ADP2	36	36
30	30	PTA2	PTB1/MOSI2/ADP1	35	35
31	31	PTA3	PTB0/MISO2/ADP0	34	34
32	32	PTA4	PTA5	33	33

MC9S08JM60



P1
PRODUCCION

Title Kit JM60			-
Size: Letter	Number:	Revision: V1	-
Date: 26/Junio/2008	Time: -	Sheet 1 of 1	-
File: kitPD_JM60.SchDoc			-